

FINAL NEET(UG)–2025 (EXAMINATION)

(Held On Sunday 4th MAY, 2025)

BIOLOGY

TEST PAPER WITH ANSWER

91. The complex II of mitochondrial electron transport chain is also known as

- (1) Cytochrome bc_1
- (2) Succinate dehydrogenase
- (3) Cytochrome c oxidase
- (4) NADH dehydrogenase

Ans. (2)

92. Polymerase chain reaction (PCR) amplifies DNA following the equation.

- (1) N^2
- (2) 2^n
- (3) $2n + 1$
- (4) $2N^2$

Ans. (2)

93. What are the potential drawbacks in adoption of the IVF method?

- A. High fatality risk to mother
- B. Expensive instruments and reagents
- C. Husband/wife necessary for being donors
- D. Less adoption of orphans
- E. Not available in India
- F. Possibility that the early embryo does not survive

Choose the **correct** answer from the options given below :

- (1) B, D, F only
- (2) A, C, D, F only
- (3) A, B, C, D only
- (4) A, B, C, E, F only

Ans. (1)

94. What is the name of the blood vessel that carries deoxygenated blood from the body to the heart in a frog ?

- (1) Aorta
- (2) Pulmonary artery
- (3) Pulmonary vein
- (4) Vena cava

Ans. (4)

95. Which one of the following statements refers to Reductionist Biology?

- (1) Physico-chemical approach to study and understand living organisms.
- (2) Physiological approach to study and understand living organisms.
- (3) Chemical approach to study and understand living organisms.
- (4) Behavioural approach to study and understand living organisms.

Ans. (1)

96. Given below are two statements :

Statement I : In the RNA world, RNA is considered the first genetic material evolved to carry out essential life processes. RNA acts as a genetic material and also as a catalyst for some important biochemical reactions in living systems. Being reactive, RNA is unstable.

Statement II : DNA evolved from RNA and is a more stable genetic material. Its double helical strands being complementary, resist changes by evolving repairing mechanism.

In the light of the above statements, choose the **most appropriate** answer from the options given below :

- (1) Both statement I and statement II are correct.
- (2) Both statement I and statement II are incorrect.
- (3) Statement I is correct but statement II is incorrect.
- (4) Statement I is incorrect but statement II is correct.

Ans. (1)

97. Epiphytes that are growing on a mango branch is an example of which of the following?

- (1) Commensalism
- (2) Mutualism
- (3) Predation
- (4) Amensalism

Ans. (1)

Predict Your
**NEET-UG
2025 RANK**



with **ALLEN's**
FREE RANK PREDICTOR!

[Click here](#)

98. From the statements given below choose the **correct** option :

- A. The eukaryotic ribosomes are 80S and prokaryotic ribosomes are 70S.
- B. Each ribosome has two sub-units.
- C. The two sub-units of 80S ribosome are 60S and 40S while that of 70S are 50S and 30S.
- D. The two sub-units of 80S ribosome are 60S and 20S and that of 70S are 50S and 20S.
- E. The two sub-units of 80S ribosome are 60S and 30S and that of 70S are 50S and 30S.

- (1) A, B, C are true (2) A, B, D are true
- (3) A, B, E are true (4) B, D, E are true

Ans. (1)

99. Which one of the following is an example of ex-situ conservation?

- (1) National park
- (2) Wildlife Sanctuary
- (3) Zoos and botanical gardens
- (4) Protected areas

Ans. (3)

100. Given below are two statements :

Statement I : The primary source of energy in an ecosystem is solar energy.

Statement II : The rate of production of organic matter during photosynthesis in an ecosystem is called net primary productivity (NPP).

In the light of the above statements, choose the **most appropriate** answer from the options given below :

- (1) Both statement I and statement II are correct.
- (2) Both statement I and statement II are incorrect.
- (3) Statement I is correct but statement II is incorrect.
- (4) Statement I is incorrect but statement II is correct.

Ans. (3)

101. Match **List-I** with **List-II**.

List-I	List-II
A. Emphysema	I. Rapid spasms in muscle due to low Ca^{++} in body fluid
B. Angina Pectoris	II. Damaged alveolar walls and decreased respiratory surface
C. Glomerulonephritis	III. Acute chest pain when not enough oxygen is reaching to heart muscle
D. Tetany	IV. Inflammation of glomeruli of kidney

Choose the **correct** answer from the options given below :

- (1) A-III, B-I, C-IV, D-II (2) A-III, B-I, C-II, D-IV
- (3) A-II, B-IV, C-III, D-I (4) A-II, B-III, C-IV, D-I

Ans. (4)

102. Given below are two statements : One is labelled as **Assertion (A)** and the other is labelled as **Reason (R)**.

Assertion (A) : Both wind and water pollinated flowers are not very colourful and do not produce nectar.

Reason (R) : The flowers produce enormous amount of pollen grains in wind and water pollinated flowers.

In the of the above statements, choose the **correct** answer from the options given below :

- (1) Both **A** and **R** are true and **R** is the correct explanation of **A**.
- (2) Both **A** and **R** are true and **R** is **NOT** the correct explanation of **A**.
- (3) **A** is true but **R** is false.
- (4) **A** is false but **R** is true.

Ans. (2)

103. Which of the following is an example of non-distilled alcoholic beverage produced by yeast?

- (1) Whisky (2) Brandy
- (3) Beer (4) Rum

Ans. (3)

Predict Your
**NEET-UG
2025 RANK**



with **ALLEN's**
FREE RANK PREDICTOR!

[Click here](#)

104. Given below are two statements :

Statement I : In a floral formula \oplus stands for zygomorphic nature of the flower, and \underline{G} stands for inferior ovary.

Statement II : In a floral formula \oplus stands for actinomorphic nature of the flower and \underline{G} stands for superior ovary.

In the light of the above statements, choose the **correct** answer from the options given below :

- (1) Both Statement I and Statement II are correct.
- (2) Both Statement I and Statement II are incorrect.
- (3) Statement I is correct but Statement II is incorrect.
- (4) Statement I is incorrect but Statement II is correct.

Ans. (4)

105. Streptokinase produced by *bacterium Streptococcus* is used for

- (1) Curd production
- (2) Ethanol production
- (3) Liver disease treatment
- (4) Removing clots from blood vessels

Ans. (4)

106. Which chromosome in the human genome has the highest number of genes ?

- (1) Chromosome X
- (2) Chromosome Y
- (3) Chromosome 1
- (4) Chromosome 10

Ans. (3)

107. Which of the following statement is **correct** about location of the male frog copulatory pad ?

- (1) First and Second digit of fore limb
- (2) First digit of hind limb
- (3) Second digit of fore limb
- (4) First digit of the fore limb

Ans. (4)

108. Which one of the following phytohormones promotes nutrient mobilization which helps in the delay of leaf senescence in plants ?

- (1) Ethylene
- (2) Absciscic acid
- (3) Gibberellin
- (4) Cytokinin

Ans. (4)

109. While trying to find out the characteristic of a newly found animal, a researcher did the histology of adult animal and observed a cavity with presence of mesodermal tissue towards the body wall but no mesodermal tissue was observed towards the alimentary canal. What could be the possible coelome of that animal ?

- (1) Acoelomate
- (2) Pseudocoelomate
- (3) Schizocoelomate
- (4) Spongocoelomate

Ans. (2)

110. Match **List-I** with **List-II**

List-I	List-II
A. Head	I. Enzymes
B. Middle piece	II. Sperm motility
C. Acrosome	III. Energy
D. Tail	IV. Genetic material

Choose the **correct** answer from the options given below :

- (1) A-IV, B-III, C-I, D-II
- (2) A-IV, B-III, C-II, D-I
- (3) A-III, B-IV, C-II, D-I
- (4) A-III, B-II, C-I, D-IV

Ans. (1)

111. Given below are the stages in the life cycle of pteridophytes. Arrange the following stages in the correct sequence.

- A. Prothallus stage
- B. Meiosis in spore mother cells
- C. Fertilisation
- D. Formation of archegonia and antheridia in gametophyte.
- E. Transfer of antherozoids to the archegonia in presence of water.

Choose the **correct** answer from the options given below :

- (1) B, A, D, E, C
- (2) B, A, E, C, D
- (3) D, E, C, A, B
- (4) E, D, C, B, A

Ans. (1)

Predict Your
**NEET-UG
2025 RANK**



with **ALLEN's**
FREE RANK PREDICTOR!

[Click here](#)

112. Cardiac activities of the heart are regulated by :

- A. Nodal tissue
- B. A special neural centre in the medulla oblongata
- C. Adrenal medullary hormones
- D. Adrenal cortical hormones

Choose the **correct** answer from the options given below :

- (1) A, B and C Only
- (2) A, B, C and D
- (3) A, C and D Only
- (4) A, B and D Only

Ans. (1)

113. Which of following organisms cannot fix nitrogen ?

- A. *Azotobacter*
- B. *Oscillatoria*
- C. *Anabaena*
- D. *Volvox*
- E. *Nostoc*

Choose the **correct** answer from the options given below :

- (1) A only
- (2) D only
- (3) B only
- (4) E only

Ans. (2)

114. Given below are two statements :

Statement I : Transfer RNAs and ribosomal RNA do not interact with mRNA.

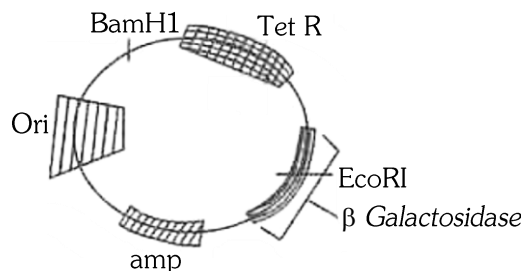
Statement II : RNA interference (RNAi) takes place in all eukaryotic organisms as a method of cellular defence.

In the light of the above statements, choose the **most appropriate** answer from the options given below :

- (1) Both Statement I and Statement II are correct
- (2) Both Statement I and Statement II are incorrect
- (3) Statement I is correct but Statement II is incorrect
- (4) Statement I is incorrect but Statement II is correct

Ans. (4)

115.



In the above represented plasmid an alien piece of DNA is inserted at EcoRI site. Which of the following strategies will be chosen to select the recombinant colonies ?

- (1) Using ampicillin & tetracyclin containing medium plate
- (2) Blue color colonies will be selected
- (3) White color colonies will be selected.
- (4) Blue color colonies grown on ampicillin plates can be selected.

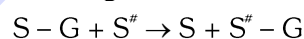
Ans. (3)

116. Which of the following genetically engineered organisms was used by Eli Lilly to prepare human insulin ?

- (1) Bacterium
- (2) Yeast
- (3) Virus
- (4) Phage

Ans. (1)

117. Name the class of enzyme that usually catalyze the following reaction :



Where, G → a group other than hydrogen

S → a substrate

S'' → another substrate

- (1) Hydrolase
- (2) Lyase
- (3) Transferase
- (4) Ligase

Ans. (3)

118. Find the statement that is **NOT** correct with regard to the structure of monocot stem.

- (1) Hypodermis is parenchymatous
- (2) Vascular bundles are scattered.
- (3) Vascular bundles are conjoint and closed.
- (4) Phloem parenchyma is absent.

Ans. (1)

Predict Your
**NEET-UG
2025 RANK**



with **ALLEN's**
FREE RANK PREDICTOR!

[Click here](#)

119. The correct sequence of events in the life cycle of bryophytes is

- A. Fusion of antherozoid with egg.
- B. Attachment of gametophyte to substratum.
- C. Reduction division to produce haploid spores.
- D. Formation of sporophyte.
- E. Release of antherozoids into water.

Choose the **correct** answer from the options given below :

- (1) D, E, A, C, B
- (2) B, E, A, C, D
- (3) B, E, A, D, C
- (4) D, E, A, B, C

Ans. (3)

120. Which are correct :

- A. Computed tomography and magnetic resonance imaging detect cancers of internal organs.
- B. Chemotherapeutics drugs are used to kill non-cancerous cells.
- C. α -interferon activate the cancer patients' immune system and helps in destroying the tumour.
- D. Chemotherapeutic drugs are biological response modifiers.
- E. In the case of leukaemia blood cell counts are decreased.

Choose the **correct** answer from the options given below:

- (1) B and D only
- (2) D and E only
- (3) C and D only
- (4) A and C only

Ans. (4)

121. Match **List - I** with **List - II**.

List - I	List - II
A. Centromere	I. Mitochondrion
B. Cilium	II. Cell division
C. Cristae	III. Cell movement
D. Cell membrane	IV. Phospholipid Bilayer

Choose the **correct** answer from the options given below :

- (1) A-I, B-II, C-III, D-IV
- (2) A-II, B-I, C-IV, D-III
- (3) A-IV, B-II, C-III, D-I
- (4) A-II, B-III, C-I, D-IV

Ans. (4)

122. Match **List I** with **List II**.

List I	List II
A. Chlorophyll a	I. Yellow-green
B. Chlorophyll b	II. Yellow
C. Xanthophylls	III. Blue-green
D. Carotenoids	IV. Yellow to Yellow-orange

Choose the option with all **correct** matches.

- (1) A-III, B-IV, C-II, D-I
- (2) A-III, B-I, C-II, D-IV
- (3) A-I, B-II, C-IV, D-III
- (4) A-I, B-IV, C-III, D-II

Ans. (2)

123. Find the **correct** statements :

- A. In human pregnancy, the major organ systems are formed at the end of 12 weeks.
- B. In human pregnancy the major organ systems are formed at the end of 8 weeks.
- C. In human pregnancy heart is formed after one month of gestation.
- D. In human pregnancy, limbs and digits develop by the end of second month.
- E. In human pregnancy the appearance of hair is usually observed in the fifth month.

Choose the **correct** answer from the options given below :

- (1) A and E Only
- (2) B and C Only
- (3) B, C, D and E Only
- (4) A, C, D and E Only

Ans. (4)

124. In the seeds of cereals, the outer covering of endosperm separates the embryo by a protein-rich layer called :

- (1) Coleoptile
- (2) Coleorhiza
- (3) Integument
- (4) Aleurone Layer

Ans. (4)

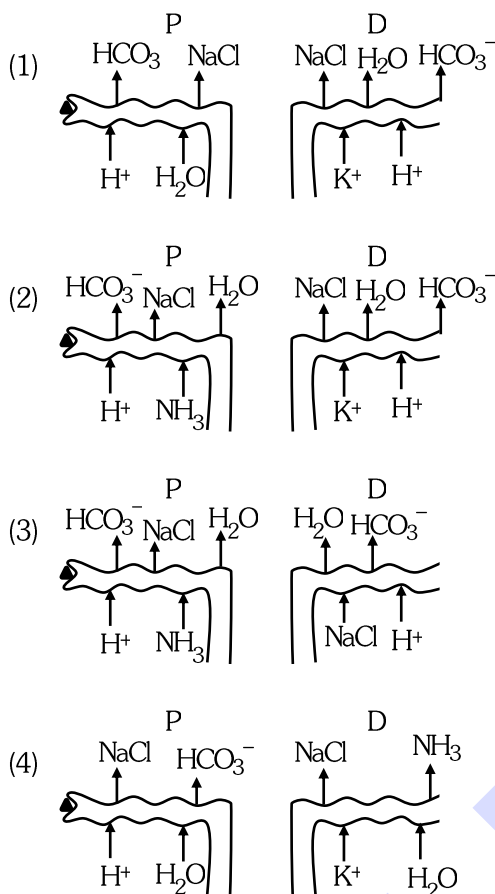
Predict Your
**NEET-UG
2025 RANK**



with **ALLEN's**
FREE RANK PREDICTOR!

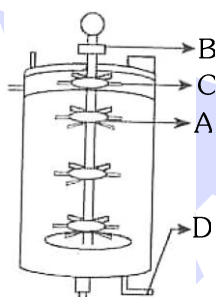
[Click here](#)

125. Which of the following diagrams is correct with regard to the proximal (P) and distal (D) tubule of the Nephron.



Ans. (2)

126. Identify the part of a bio-reactor which is used as a foam braker from the given figure.



- (1) A (2) B
(3) D (4) C

Ans. (4)

127. Given below are two statements : One is labelled as **Assertion (A)** and the other is labelled as **Reason (R)**.

Assertion (A) : A typical unfertilised, angiosperm embryo sac at maturity is 8 nucleate and 7-celled.

Reason (R) : The egg apparatus has 2 polar nuclei.

In the light of the above statements, choose the **correct** answer from the options given below :

- (1) Both **A** and **R** are true and **R** is the correct explanation of **A**.
(2) Both **A** and **R** are true but **R** is **NOT** the correct explanation of **A**.
(3) **A** is true but **R** is false.
(4) **A** is false but **R** is true.

Ans. (3)

128. A specialised membranous structure in a prokaryotic cell which helps in cell wall formation, DNA replication and respiration is :

- (1) Mesosome (2) Chromatophores
(3) Cristae (4) Endoplasmic Reticulum

Ans. (1)

129. Which of the following are the post-transcriptional events in an eukaryotic cell ?

- A. Transport of pre-mRNA to cytoplasm prior to splicing.
B. Removal of introns and joining of exons.
C. Addition of methyl group 5' end of hnRNA.
D. Addition of adenine residues at 3' end of hnRNA.
E. Base pairing of two complementary RNAs.

Choose the **correct** answer from the options given below :

- (1) A, B, C only (2) B, C, D only
(3) B, C, E only (4) C, D, E only

Ans. (2)

130. What is the pattern of inheritance for polygenic trait?

- (1) Mendelian inheritance pattern
(2) Non-mendelian inheritance pattern
(3) Autosomal dominant pattern
(4) X-linked recessive inheritance pattern

Ans. (2)

Predict Your
**NEET-UG
2025 RANK**



with **ALLEN's**
FREE RANK PREDICTOR!

[Click here](#)

131. Which one of the following enzymes contains 'Haem' as the prosthetic group ?

- (1) RuBisCo
- (2) Carbonic anhydrase
- (3) Succinate dehydrogenase
- (4) Catalase

Ans. (4)

132. Each of the following characteristics represent a Kingdom proposed by Whittaker. Arrange the following in increasing order of complexity of body organization.

- A. Multicellular heterotrophs with cell wall made of chitin.
- B. Heterotrophs with tissue/organ/organ system level of body organization.
- C. Prokaryotes with cell wall made of polysaccharides and amino acids.
- D. Eukaryotic autotrophs with tissue/organ level of body organization.

Choose the **correct** answer from the options given below :

- | | |
|-------------------|-------------------|
| (1) A, C, E, B, D | (2) C, E, A, D, B |
| (3) A, C, E, D, B | (4) C, E, A, B, D |

Ans. (2)

133. Who is known as the father of Ecology in India ?

- (1) S.R. Kashyap
- (2) Ramdeo Misra
- (3) Ram Udar
- (4) Birbal Sahni

Ans. (2)

134. Match **List-I** with **List-II**.

List-I	List-II
A. Alfred Hershey and Martha Chase	I. Streptococcus pneumoniae
B. Euchromatin	II. Densely packed and dark-stained
C. Frederick Griffith	III. Loosely packed and light-stained
D. Heterochromatin	IV. DNA as genetic material confirmation

Choose the **correct** answer from the options given below :

- (1) A-II, B-IV, C-I, D-III
- (2) A-IV, B-II, C-I, D-III
- (3) A-IV, B-III, C-I, D-II
- (4) A-III, B-II, C-IV, D-I

Ans. (3)

For Class 12th pass students
It's your chance to shine in **NEET-UG 2026**

Join **ALLEN's**
LEADER COURSE

Online Programs

6 & 20 May



Classroom Courses

14 & 21 May



Predict Your
NEET-UG
2025 RANK



with **ALLEN's**
FREE RANK PREDICTOR!

[Click here](#)

135. Neoplastic characteristics of cells refer to:

- A. A mass of proliferating cell
- B. Rapid growth of cells
- C. Invasion and damage to the surrounding tissue
- D. Those confined to original location

Choose the **correct** answer from the options given below:

- (1) A, B only (2) A, B, C only
- (3) A, B, D only (4) B, C, D only

Ans. (2)

136. Given below are two statements:

Statement I: The DNA fragments extracted from gel electrophoresis can be used in construction of recombinant DNA.

Statement II: Smaller size DNA fragments are observed near anode while larger fragments are found near the wells in an agarose gel.

In the light of the above statements, choose the **most appropriate** answer from the options given below:

- (1) Both statement I and statement II are correct
- (2) Both statement I and statement II are incorrect
- (3) Statement I is correct but statement II is incorrect
- (4) Statement I is incorrect but statement II is correct

Ans. (1)

137. Match **List-I** with **List-II**.

List-I	List-II
A. Adenosine	I. Nitrogen base
B. Adenylic acid	II. Nucleotide
C. Adenine	III. Nucleoside
D. Alanine	IV. Amino acid

Choose the option with all **correct** matches :

- (1) A-III, B-IV, C-II, D-I
- (2) A-III, B-II, C-IV, D-I
- (3) A-III, B-II, C-I, D-IV
- (4) A-II, B-III, C-I, D-IV

Ans. (3)

138. Consider the following:

- A. The reductive division for the human female gametogenesis starts earlier than that of the male gametogenesis.
- B. The gap between the first meiotic division and the second meiotic division is much shorter for males compared to females.
- C. The first polar body is associated with the formation of the primary oocyte.
- D. Luteinizing Hormone (LH) surge leads to disintegration of the endometrium and onset of menstrual bleeding.

Choose the **correct** answer from the options given below:

- (1) A and B are true (2) A and C are true
- (3) B and D are true (4) B and C are true

Ans. (1)

139. All living members of the class Cyclostomata are:

- (1) Free living (2) Endoparasite
- (3) Symbiotic (4) Ectoparasite

Ans. (4)

140. Given below are two statements: one is labelled as **Assertion (A)** and the other is labelled as **Reason (R)**.

Assertion (A): The primary function of the Golgi apparatus is to package the materials made by the endoplasmic reticulum and deliver it to intracellular targets and outside the cell.

Reason (R): Vesicles containing materials made by the endoplasmic reticulum fuse with the cis face of the Golgi apparatus, and they are modified and released from the trans face of the Golgi apparatus. In the light of the above statements, choose the **correct** answer from the options given below:

- (1) Both **A** and **R** are true and **R** is the correct explanation of **A**
- (2) Both **A** and **R** are true but **R** is **not** the correct explanation of **A**
- (3) **A** is true but **R** is false
- (4) **A** is false but **R** is true

Ans. (1)

Predict Your
**NEET-UG
2025 RANK**



with **ALLEN's**
FREE RANK PREDICTOR!

[Click here](#)

141. Match **List-I** with **List-II**.

List-I	List-II
A. Scutellum	I. Persistent nucellus
B. Non-albuminous seed	II. Cotyledon of Monocot seed
C. Epiblast	III. Groundnut
D. Perisperm	IV. Rudimentary cotyledon

Choose the option with all **correct** matches.

- (1) A-II, B-III, C-IV, D-I
- (2) A-IV, B-III, C-II, D-I
- (3) A-IV, B-III, C-I, D-II
- (4) A-II, B-IV, C-III, D-I

Ans. (1)

142. Given below are two statements: one is labelled as **Assertion (A)** and the other is labelled as **Reason (R)**.

Assertion (A): All vertebrates are chordates but all chordates are not vertebrate.

Reason (R): The members of subphylum vertebrata possess notochord during the embryonic period, the notochord is replaced by a cartilaginous or bony vertebral column in adults.

In the light of the above statements, choose the correct answer from the options given below:

- (1) Both **A** and **R** are true and **R** is the correct explanation of **A**
- (2) Both **A** and **R** are true but **R** is not the correct explanation of **A**
- (3) **A** is true but **R** is false
- (4) **A** is false but **R** is true

Ans. (1)

143. Identify the statement that is **NOT** correct.

- (1) Each antibody has two light and two heavy chains.
- (2) The heavy and light chains are held together by disulfide bonds.
- (3) Antigen binding site is located at C-terminal region of antibody molecules.
- (4) Constant region of heavy and light chains are located at C-terminus of antibody molecules.

Ans. (3)

144. Silencing of specific mRNA is possible via RNAi because of -

- (1) Complementary dsRNA
- (2) Inhibitory ssRNA
- (3) Complementary tRNA
- (4) Non-complementary ssRNA

Ans. (1)

145. Genes R and Y follow independent assortment. If RRYYY produce round yellow seeds and rryy produce wrinkled green seeds, what will be the phenotypic ratio of the F₂ generation?

- (1) Phenotypic ratio – 1 : 2 : 1
- (2) Phenotypic ratio – 3 : 1
- (3) Phenotypic ratio – 9 : 3 : 3 : 1
- (4) Phenotypic ratio – 9 : 7

Ans. (3)

146. Histones are enriched with -

- (1) Lysine & Arginine
- (2) Leucine & Lysine
- (3) Phenylalanine & Leucine
- (4) Phenylalanine & Arginine

Ans. (1)

147. The first menstruation is called :

- (1) Menopause
- (2) Menarche
- (3) Diapause
- (4) Ovulation

Ans. (2)

Predict Your
**NEET-UG
2025 RANK**



with **ALLEN's**
FREE RANK PREDICTOR!

[Click here](#)

148. Match List - I with List - II.

List-I	List-II
A. Heart	I. Erythropoietin
B. Kidney	II. Aldosterone
C. Gastro-intestinal tract	III. Atrial natriuretic factor
D. Adrenal Cortex	IV. Secretin

Choose the **correct** answer from the options given below :

- (1) A-II, B-I, C-III, D-IV
- (2) A-IV, B-III, C-II, D-I
- (3) A-I, B-III, C-IV, D-II
- (4) A-III, B-I, C-IV, D-II

Ans. (4)

149. The protein portion of an enzyme is called :

- (1) Cofactor
- (2) Coenzyme
- (3) Apoenzyme
- (4) Prosthetic group

Ans. (3)

150. Which of the following is the unit of productivity of an ecosystem ?

- (1) gm^{-2}
- (2) KCal m^{-2}
- (3) KCal m^{-3}
- (4) $(\text{KCal m}^{-2})\text{yr}^{-1}$

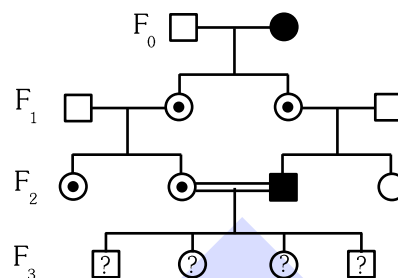
Ans. (4)

151. Sweet potato and potato represent a certain type of evolution. Select the correct combination of terms to explain the evolution.

- (1) Analogy, convergent
- (2) Homology, divergent
- (3) Homology, convergent
- (4) Analogy, divergent

Ans. (1)

152. With the help of given pedigree, find out the probability for the birth of a child having no disease and being a carrier (has the disease mutation in one allele of the gene) in F_3 generation.



- Unaffected male
- Affected male
- ⊙ Carrier female
- Unaffected female
- Affected female

- (1) $1/4$
- (2) $1/2$
- (3) $1/8$
- (4) Zero

Ans. (1), (2)

153. Given below are two statements : One is labelled as **Assertion (A)** and the other is labelled as **Reason (R)**.

Assertion (A) : Cells of the tapetum possess dense cytoplasm and generally have more than one nucleus.

Reason (R) : Presence of more than one nucleus in the tapetum increase the efficiency of nourishing the developing microspore mother cells

In light of the above statements, choose the **most appropriate** answer from the options given below:

- (1) Both **A** and **R** are true and **R** is the correct explanation of **A**.
- (2) Both **A** and **R** are true and **R** is **NOT** the correct explanation of **A**.
- (3) **A** is true but **R** is false.
- (4) **A** is false but **R** is true.

Ans. (1)

Predict Your
**NEET-UG
2025 RANK**



with **ALLEN's**
FREE RANK PREDICTOR!

[Click here](#)

154. How many meiotic and mitotic divisions need to occur for the development of a mature female gametophyte from the megaspore mother cell in an angiosperm plant ?

- (1) 2 Meiosis and 3 Mitosis
- (2) 1 Meiosis and 2 Mitosis
- (3) 1 Meiosis and 3 Mitosis
- (4) No Meiosis and 3 Mitosis

Ans. (3)

155. Which of the following is an example of a zygomorphic flower ?

- (1) Petunia
- (2) Datura
- (3) Pea
- (4) Chilli

Ans. (3)

156. After maturation, in primary lymphoid organs, the lymphocytes migrate for interaction with antigens to secondary lymphoid organ(s) / tissue(s) like:

- A. thymus
- B. bone marrow
- C. spleen
- D. lymph nodes
- E. Peyer's patches

Choose the **correct** answer from the options given below:

- (1) B, C, D only
- (2) A, B, C only
- (3) E, A, B only
- (4) C, D, E only

Ans. (4)

157. Given below are two statements :

Statement I: Fig fruit is a non-vegetarian fruit as it has enclosed fig wasps in it.

Statement II: Fig wasp and fig tree exhibit mutual relationship as fig wasp completes its life cycle in fig fruit and fig fruit gets pollinated by fig wasp.

In the light of the above statements, choose the **most appropriate** answer from the options. given below:

- (1) Both statement I and statement II are correct
- (2) Both statement I and statement II are incorrect
- (3) Statement I is correct but statement II is incorrect
- (4) Statement I is incorrect but statement II is correct

Ans. (2)

158 What is the main function of the spindle fibers during mitosis?

- (1) To separate the chromosomes
- (2) To synthesize new DNA
- (3) To repair damaged DNA
- (4) To regulate cell growth

Ans. (1)

159. Which one of the following is the characteristic feature of gymnosperms?

- (1) Seeds are enclosed in fruits.
- (2) Seeds are naked.
- (3) Seeds are absent.
- (4) Gymnosperms have flowers for reproduction.

Ans. (2)

160. Consider the following statements regarding function of adrenal medullary hormones :

- A. It causes pupillary constriction
- B. It is a hyperglycemic hormone
- C. It causes piloerection
- D. It increases strength of heart contraction

Choose the **correct** answer from the options/ given below:

- (1) C and D Only
- (2) B, C and D Only
- (3) A, C and D Only
- (4) D Only

Ans. (2)

161. Why can't insulin be given orally to diabetic patients ?

- (1) Human body will elicit strong immune response
- (2) It will be digested in Gastro-Intestinal (GI) tract
- (3) Because of structural variation
- (4) Its bioavailability will be increased

Ans. (2)

162. Match **List-I** with **List-II**

List-I	List-II
A. Pteridophyte	I. <i>Salvia</i>
B. Bryophyte	II. <i>Ginkgo</i>
C. Angiosperm	III. <i>Polytrichum</i>
D. Gymnosperm	IV. <i>Salvinia</i>

Choose the option with all **correct** matches :

- (1) A-III, B-IV, C-II, D-I
- (2) A-IV, B-III, C-I, D-II
- (3) A-III, B-IV, C-I, D-II
- (4) A-IV, B-III, C-II, D-I

Ans. (2)

Predict Your
**NEET-UG
2025 RANK**



with **ALLEN's**
FREE RANK PREDICTOR!

[Click here](#)

163. Who proposed that the genetic code for amino acids should be made up of three nucleotides ?

- (1) George Gamow (2) Francis Crick
(3) Jacques Monod (4) Franklin Stahl

Ans. (1)

164. Match **List-I** with **List-II** :

List-I	List-II
A. The Evil Quartet	I. Cryopreservation
B. Ex situ conservation	II. Alien species invasion
C. <i>Lantana camara</i>	III. Causes of biodiversity losses
D. Dodo	IV. Extinction

Choose the option with all correct matches :

- (1) A-III, B-II, C-I, D-IV
(2) A-III, B-I, C-II, D-IV
(3) A-III, B-IV, C-II, D-I
(4) A-III, B-II, C-IV, D-I

Ans. (2)

165. Which of the following hormones released from the pituitary is actually synthesized in the hypothalamus?

- (1) Luteinizing hormone (LH)
(2) Anti-diuretic hormone (ADH)
(3) Follicle-stimulating hormone (FSH)
(4) Adenocorticotrophic hormone (ACTH)

Ans. (2)

166. Role of the water vascular system in Echinoderms is :

- A. Respiration and Locomotion
B. Excretion and Locomotion
C. Capture and transport of food
D. Digestion and Respiration
E. Digestion and Excretion

Choose the **correct** answer from the options given below :

- (1) A and B only
(2) A and C only
(3) B and C only
(4) B, D and E only

Ans. (2)

167. Which of the following type of immunity is present at the time of birth and is a non-specific type of defence in the human body ?

- (1) Acquired Immunity
(2) Innate Immunity
(3) Cell-mediated Immunity
(4) Humoral Immunity

Ans. (2)

168. In bryophytes, the gemmae help in which one of the following ?

- (1) Sexual reproduction (2) Asexual reproduction
(3) Nutrient absorption (4) Gaseous exchange

Ans. (2)

169. In frog, the Renal portal system is a special venous connection that acts to link :

- (1) Liver and intestine
(2) Liver and kidney
(3) Kidney and intestine
(4) Kidney and lower part of body

Ans. (4)

170. Given below are two statements :

Statement I : In ecosystem, there is unidirectional flow of energy of sun from producers of consumers.

Statement II : Ecosystems are exempted from 2nd law of thermodynamics.

In the light of the above statements, choose the **most appropriate** answer from the options given below :

- (1) Both statement-I and statement II are correct
(2) Both statement-I and statement II are incorrect
(3) Statement-I is correct but statement II is incorrect
(4) Statement-I is incorrect but statement II is correct

Ans. (3)

171. Which of the following statements about RuBisCO is true ?

- (1) It is active only in the dark.
(2) It has higher affinity of oxygen than carbon dioxide.
(3) It is an enzyme involved in the photolysis of water.
(4) It catalyzes the carboxylation of RuBP

Ans. (4)

Predict Your
**NEET-UG
2025 RANK**



with **ALLEN's**
FREE RANK PREDICTOR!

[Click here](#)

172. Which of the following enzyme(s) are **NOT** essential for gene cloning ?

- A. Restriction enzymes
- B. DNA ligase
- C. DNA mutase
- D. DNA recombinase
- E. DNA polymerase

Choose the **correct** answer from the options given below :

- (1) C and D only
- (2) A and B only
- (3) D and E only
- (4) B and C only

Ans. (1)

173. Read the following statements on plant growth and development.

- A. Parthenocarpy can be induced by auxins.
- B. Plant growth regulators can be involved in promotion as well as inhibition of growth.
- C. Dedifferentiation is a pre-requisite for re-differentiation.
- D. Absciscic acid is a plant growth promoter.
- E. Apical dominance promotes the growth of lateral buds.

Choose the option with all correct statements.

- (1) A, B, C only
- (2) A, C, E only
- (3) A, D, E only
- (4) B, D, E only

Ans. (1)

174. Which factor is important for termination of transcription ?

- (1) α (alpha)
- (2) σ (sigma)
- (3) ρ (rho)
- (4) γ (gamma)

Ans. (3)

175. Frogs respire in water by skin and buccal cavity and on land by skin, buccal cavity and lungs. Choose the **correct** answer from the following :

- (1) The statement is true for water but false for land
- (2) The statement is true for both the environment
- (3) The statement is false for water but true for land
- (4) The statement is false for both the environment

Ans. (3)

176. Twins are born to a family that lives next door to you. The twins are a boy and a girl. Which of the following must be true?

- (1) They are monozygotic twins.
- (2) They are fraternal twins
- (3) They were conceived through in vitro fertilization.
- (4) They have 75% identical genetic content.

Ans. (2)

177. Which of the following microbes is **NOT** involved in the preparation of household products?

- A. *Aspergillus niger*
- B. *Lactobacillus*
- C. *Trichoderma pulvisporum*
- D. *Saccharomyces cerevisiae*
- E. *Propionibacterium sharmanii*

Choose the **correct** answer from the options given below :

- (1) A and B only
- (2) A and C only
- (3) C and D only
- (4) C and E only

Ans. (2)

178. Match **List-I** with **List-II**

List-I	List-II
A. Progesterone	I. Pars intermedia
B. Relaxin	II. Ovary
C. Melanocyte stimulating hormone	III. Adrenal Medulla
D. Catecholamines	IV. Corpus luteum

Choose the **correct** answer from the options given below :

- (1) A-IV, B-II, C-I, D-III
- (2) A-IV, B-II, C-III, D-I
- (3) A-II, B-IV, C-I, D-III
- (4) A-III, B-II, C-IV, D-I

Ans. (1)

Predict Your
**NEET-UG
2025 RANK**



with **ALLEN's**
FREE RANK PREDICTOR!

[Click here](#)

179. The blue and white selectable markers have been developed which differentiate recombinant colonies from non-recombinant colonies on the basis of their ability to produce colour in the presence of a chromogenic substrate.

Given below are two statements about this method :

Statement-I : The blue coloured colonies have DNA insert in the plasmid and they are identified as recombinant colonies.

Statement-II : The colonies without blue colour have DNA insert in the plasmid and are identified as recombinant colonies.

In the light of the above statements, choose the **most appropriate** answer from the options given below :

- (1) Both Statement I and Statement II are correct
- (2) Both Statement I and Statement II is incorrect
- (3) Statement I is correct but Statement II is incorrect
- (4) Statement I is incorrect but Statement II is correct

Ans. (4)

180. Which one of the following equations represents the Verhulst-Pearl Logistic Growth of population?

(1) $\frac{dN}{dt} = r \left(\frac{K - N}{K} \right)$

(2) $\frac{dN}{dt} = rN \left(\frac{K - N}{K} \right)$

(3) $\frac{dN}{dt} = rN \left(\frac{N - K}{N} \right)$

(4) $\frac{dN}{dt} = N \left(\frac{r - K}{K} \right)$

Ans. (2)

Predict Your
**NEET-UG
2025 RANK**



with **ALLEN's**
FREE RANK PREDICTOR!

[Click here](#)

ALLEN ONLINE

Apne **NEET 2026** preparation ko banao STRONG!

NEET PowerPlus •LIVE Course

Limited-time offer

~~₹ 25,000/-~~

₹ 9,990*

Batches starting

15th May

GST applicable*



LIVE classes with top Kota faculty



24/7 doubt support



Regular tests, PYQs & more



Enrol Now

ALLEN KOTA

**For Class 12th pass/
Ex-ALLEN Students**

**Give wings to your
Medical Dreams with ALLEN**

**JOIN ACHIEVER COURSE
NEET-UG 2026**

13 & 20 May

Click to know more

AIR 1
720/720
NEET-UG 2024
Mazin Mansoor
CLASSROOM



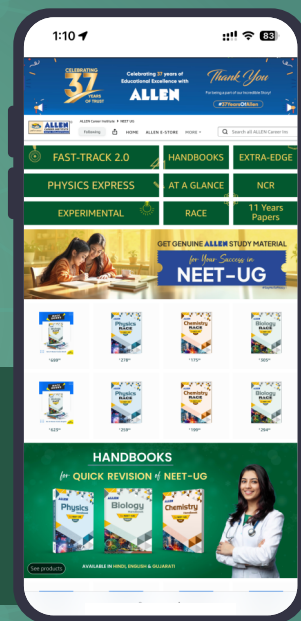
ALLEN

Get The Latest
NEET-UG Special Books
at Your Door Steps...!!

JOIN THE JOURNEY OF LEARNING

with

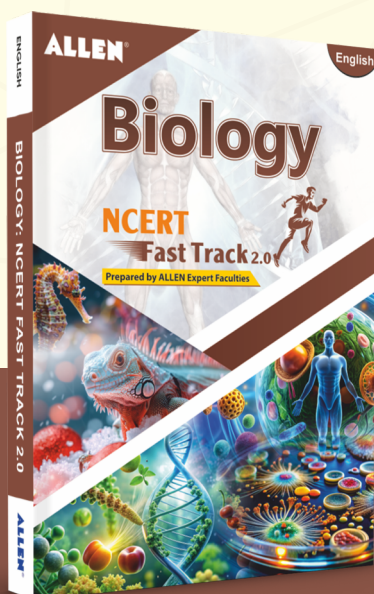
NCERT Fast Track | NCR | RACE
Extra Edge | Experimental | 11 Years Papers
Handbooks | At a Glance | Physics Express



SHOP NOW

Available in **HINDI**,
ENGLISH & GUJARATI

ALLEN



SIMPLIFY. VISUALIZE. REVISE.
with **FAST TRACK 2.0 !**

**NCERT Fast Track पढ़े
Selection कि ओर बढ़े**

SHOP NOW

Available in **HINDI & ENGLISH**